

REBLOC RB140SFS-5.5

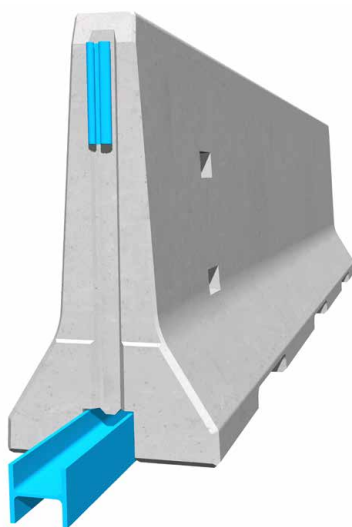
Standard element

Installation
Free standing

N2	W2 ¹⁾
H4a	W4



Containment level	N2 (covers N1, T3, T2 and T1)
Working width	W2 (covers W3, W4, W5, W6, W7 and W8)
Containment level	H4a (covers H3, H2, H1, N1, T3, T2 and T1)
Working width	W4 (covers W5, W6, W7 and W8)
Impact severity level	ASI B



Precast concrete vehicle restraint systems are used for long lasting protection on the central reservation and along the verge. Vehicles deviating from the road are retained or redirected and prevent a dangerous breakthrough onto the opposite carriageway.

The integrated, innovative coupling does not contain any loose parts. This does not only enhance the safety, but also the installation speed. The easy installation, which does not depend on weather conditions, reduces the disruptions of the traffic flow.

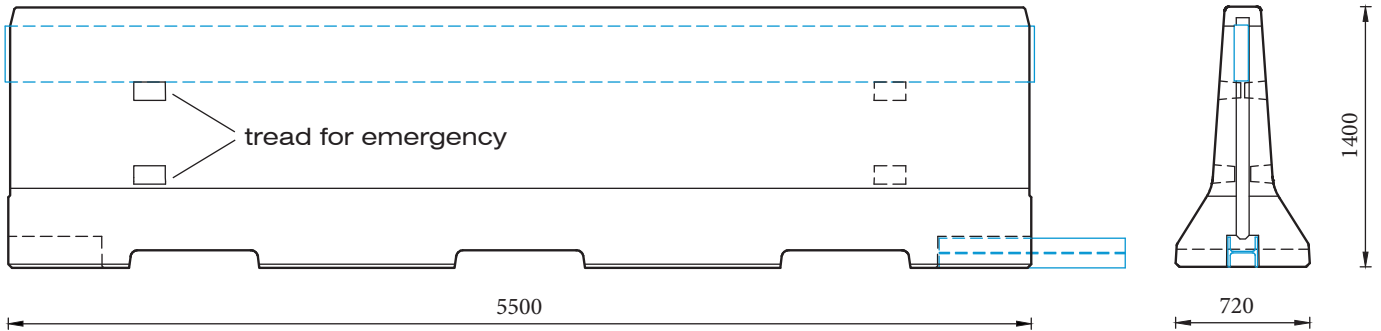
Thanks to the interlocking coupling, there are no loose parts, which prevents unauthorized removal of pieces and protects fully against vandalism.

REBLOC 140SFS_5.5

Standard element

N2	W2
H4a	W4

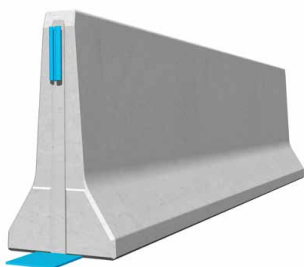
Technical data



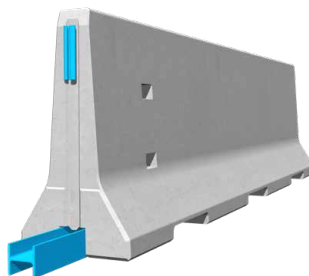
all dimensions in mm

Containment level	N2	H4a
Working width	W2	W4
Impact severity level	ASI B	ASI B
CE certification	✓	
Installation	free standing on asphalt/concrete	
Terminal elements	required; REBLOC 140SFS_6T (4 x screwbolts Ø 20 mm)	
Dimensions L x W x H in mm	5500 x 720 x 1400 mm	
Weight/element (approx.)	6000 kg	
Elements/truck (24 t)	4 elements	
Minimum installation length	88 m (not including terminal elements)	
Curve radius	r ≥ 197 m, smaller radii on request	
Coupling/exposed steel parts	fully integrated, exposed parts hot-dip galvanized	

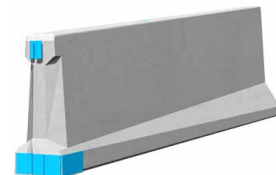
System element - combinable



Transition/terminal element
REBLOC 140SFS_5.5TS



Standard element
REBLOC 140SFS_5.5_H4a/W4



Transition element
REBLOC 80S_140SFS_5.5